



Ensuring Equity in Aging Webinar Series

**Peer-led discussions and
insights on serving older
adults in culturally
responsive ways**

**Culturally Informed
Care: Honoring Native
Elders**

Series Launches Nov 4, 2020
#CaliforniaForAllAges

Webinar Logistics

- **To join audio by telephone: 888-788-0099**
- **[Register and Join by smart phone, tablet, or computer](#)**
- **Meeting ID: 975 9661 3220 Password: 153029**
- **Live captioning streamed through webinar (Zoom)**



Questions & Comments

- **The final 10 minutes of the webinar is reserved for questions and comments:**
 - Attendees joining by **phone**, press *9 on your dial pad to join line. The moderator will announce the last 4 digits of your phone number and will unmute your line.
 - Attendees joining by **webinar (Zoom)**, click the raise hand button to join line. The moderator will announce your name or your last 4 digits of your phone number and will unmute your line.
 - For additional public comment or for meeting feedback email Engage@aging.ca.gov.



Ensuring Equity in Aging Webinar Series

- 1st Wednesday of each month: November 2020 – June 2021
- State and local speakers with expertise in the subjects of cultural competency, equity, program and service delivery
- Let's learn together how we can help make our communities a more just place and build a **California for ALL Ages**



UPCOMING WEBINARS

- **December 2, 2020** - [Culturally Informed Policy & Programs With and For People with Disabilities](#)
- **January 6, 2021** - [Culturally Informed Policy and Programs: The Culture of LGBTQ Older Adults](#)
- **February 3, 2021** - [Culturally Responsive Services & Care With and For Black Elders](#)

Register in advance!



Welcome & Introductions



Kim McCoy Wade

Director

California Department of Aging (CDA)



Today's Speaker



Kori Novak, PhD, MBA

Chief Executive Officer

Toiyabe Indian Health Project, Inc





Ensuring Equity in Aging Webinar Series
Culturally Informed Care: Honoring Native Elders

Kori Novak, PhD, MBA
Chief Executive Officer
Toiyabe Indian Health Clinic



TOIYABE
INDIAN HEALTH PROJECT

Objectives

- To have a better understanding on the provision of Direct Services utilizing cultural humility & responsiveness
 - Understand Indian Health Programs in CA and how Tribal Elders utilize them
- Understand the Unique Challenges faced by Elders in Rural Health populations
- Top Takeaways for Healthcare Providers



AIAN Populations in the U.S.

- In the United States, 5.2 million people identify as American Indian (AI) or Alaska Native (AN)
- 570+ federally recognized Tribes
 - 34 US States
 - Alaska – 231 federally recognized Tribes
- Over 200 indigenous languages



California has the Largest AIAN Population in the U.S.

- CA has over 720,000 AIAN individuals (~2% of the CA population).
- There are 109 Federally recognized Tribes
 - There are 85 reservations or “Rancherias”





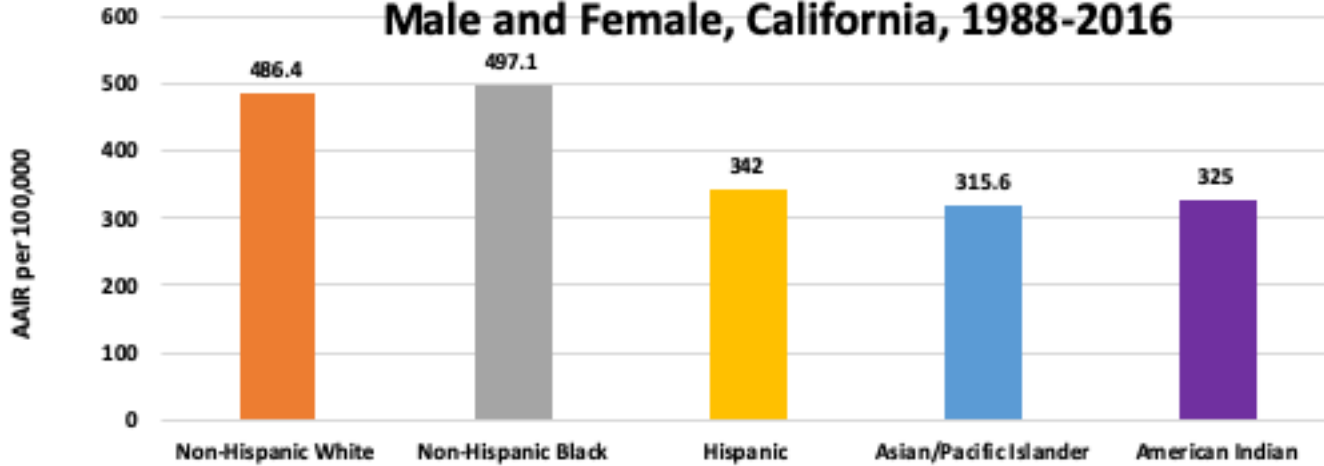
I am Native American.

Policies that Affect older Native Americans

- IHS Elder Care Initiative
- Brain health Initiative
- Long Term Care in Indian Country
- Affordable Care Act
- AB1896



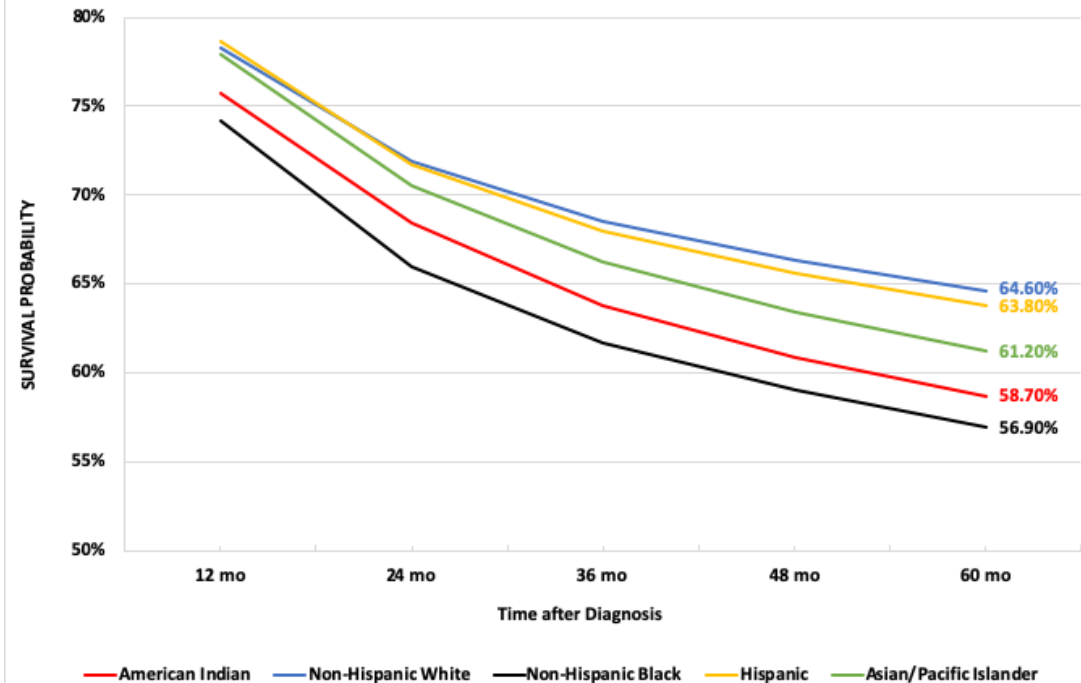
Age-Adjusted Incidence Rate, All Sites, Male and Female, California, 1988-2016



- All populations have one of the **lowest incidence rates** of all cancer sites among other race/ethnicities, with Asian/Pacific Islander experiencing the lowest.

- However, when looking at survival rates by race/ethnicity, AI's have the second **lowest survival rate**, with non-Hispanic Black experiencing the lowest.

RELATIVE SURVIVAL BY RACE/ETHNICITY, ALL CANCER SITES, CALIFORNIA, 1988-2016



Late Stage Diagnosis



- Among AIANs, gender, type of insurance, and neighborhood SES associated with stage at diagnosis.
 - Male patient in poor areas significantly more likely to be diagnosed late.
 - Patients with Medicaid/IHS/public insurance or uninsured more likely to be diagnosed late.
 - AIANs who live in Purchased/Referred Care Delivery Area (PRCDA) county are significantly more likely to be diagnosed late than a non-PRCDA county.
-

Limitations of the Data

- Racial misclassification
- Undercounting
- Not enough numbers to form a conclusion
- Cannot be generalizable



Service Delivery to Native Elders: Remember the basics!

- Consistency is key
 - If you are not native consistency is among the only ways to gain trust
 - Consistency matters in what you say and what you do
- Many elders may struggle with technology
 - Lack of both interest AND Internet
 - Disdain for the use of tech in an appointment
 - Eye contact



Service Delivery cont.



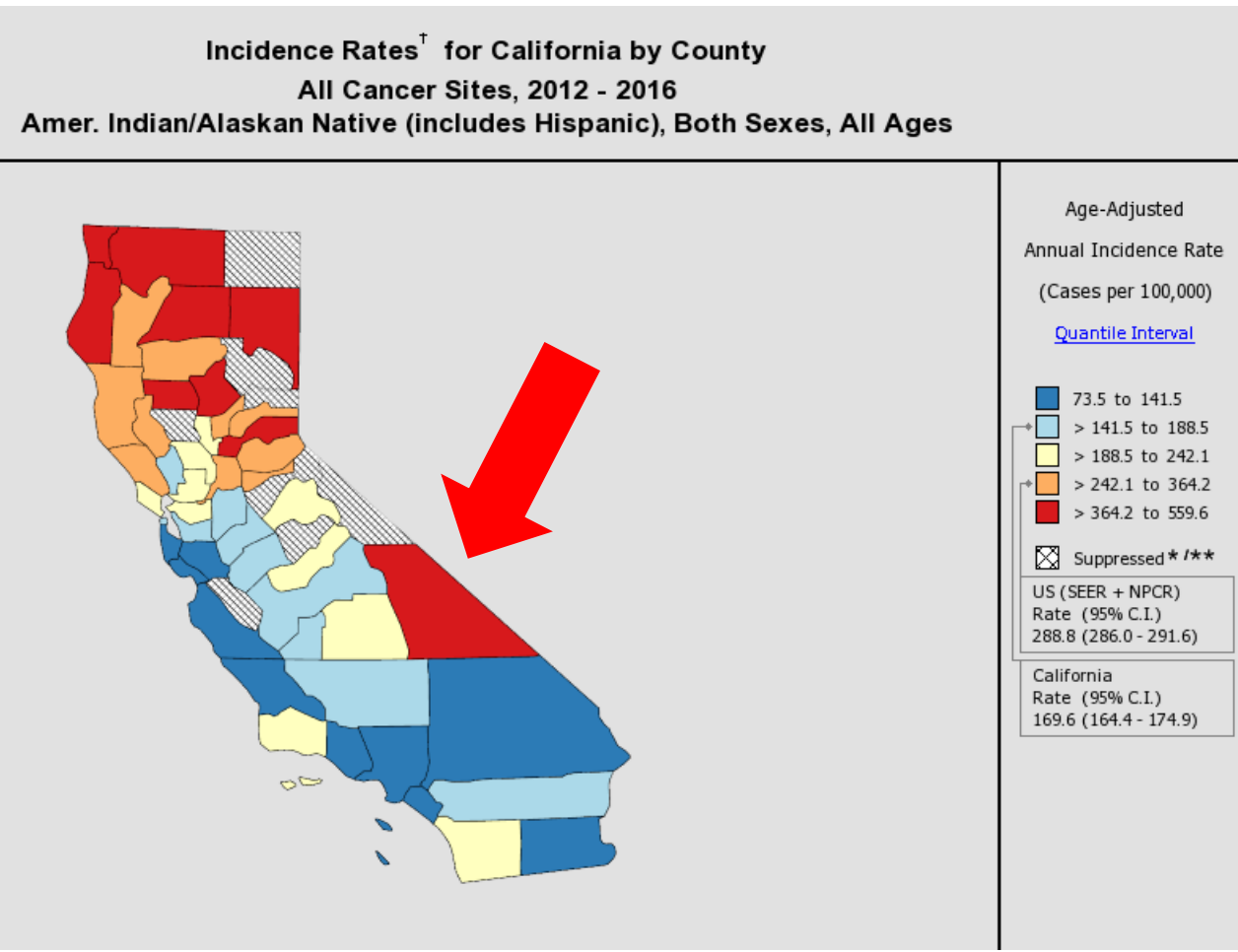
- Many Elders may have significant transportation problems
 - In order to see them you may need to be flexible
 - Both easier and more difficult with COVID
 - Listen. Listen and then Listen.
 - Don't dismiss traditional medicine
 - Tone means a lot
-

Indian Health Programs

California Tribal Epidemiology Center



Updated June 2019





The Toiyabe Indian Health Project is the only Indian Health Facility in California that provides Dialysis Services

There are no IHS hospitals in the state of California. The closest IHS hospital for CA tribal people is the Whiteriver Indian Hospital in Whiteriver, Arizona

The average distance between an Indian Reservation and a Trauma Level II hospital is...

- A. 45 min- 1 hour
- B. 2-3 hours
- C. 2.5-4 hours
- D. 6+ Hours





What Needs to Be Done

- Improve methods of disease surveillance in AIAN communities
 - Address cross cutting issues
 - Increase screening/diagnosis
 - Access to treatment
 - Establish partnerships for specialty care
 - Advocacy on multiple levels to increase collaborative solutions
-

Thank you



Dr. Kori Novak
Chief Executive Officer
Toiyabe Indian Health Project
Kori.Novak@toiyabe.us
760-842-8464

Questions & Comments

- **The final 10 minutes of the webinar is reserved for questions and comments:**
 - Attendees joining by **phone**, press *9 on your dial pad to join line. The moderator will announce the last 4 digits of your phone number and will unmute your line.
 - Attendees joining by **webinar (Zoom)**, click the raise hand button to join line. The moderator will announce your name or your last 4 digits of your phone number and will unmute your line.
 - For additional public comment or for meeting feedback email Engage@aging.ca.gov.



Thank You!

- Visit CDA's Aging & Equity Resources for More Information:
 - [Equity in Aging Resource Center](#)
 - [California For All Ages Campaign](#)
 - [Tribal Elder COVID-19 Resources](#)
- Send questions and comments to engage@aging.ca.gov

